



Douglas A. Ducey,  
Arizona Governor

# Arizona State Board of Massage Therapy

*Protecting the Public &  
Serving the Industry*

1740 W. Adams, Suite 3401  
Phoenix, Arizona 85007  
602.542.8604  
E: [info@massageboard.az.gov](mailto:info@massageboard.az.gov)  
W: [www.massageboard.az.gov](http://www.massageboard.az.gov)

## Board Members

**Chair**  
Angela Reiter, LMT

**Vice Chair**  
Vacant

**Board Member**  
Bailey DeRoest

**Board Member**  
Michael Tapscott

**Board Member**  
Vacant

## Board Staff

Tom Aughterton  
**Executive Director**

Tony J. Wilcox  
**Licensing/Operations  
Specialist**

David R. Elson III  
**Senior Board  
Investigator**

Mr. Paul S. Schuldt  
**Applicant Reception**

August 30, 2024

The Honorable Katie Hobbs  
Governor, State of Arizona  
Arizona State Capitol, Executive Tower  
1700 W. Washington  
Phoenix, Arizona 85007

RE: Fiscal Year 2025 Budget Submission; Arizona Board of Massage Therapy

Dear Governor Hobbs:

Please accept this submittal package from the Arizona Board of Massage Therapy, to respond to, and comply with, the scheduled FY'2025 budget request to the State.

The binder contents comprise:

- An organizational chart for the State Board
- The Board's operating funds budget request from the Board revolving fund
- The Board's Five-Year Strategic Plan

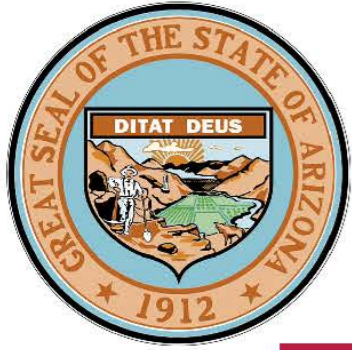
Thank you for this opportunity to provide your office with the FY'2025 of the Arizona Massage Board.

Respectfully,

A handwritten signature in black ink, appearing to read "Tom A.", written over a white background.

Tom Aughterton  
Executive Director

cc: Office of Strategic Planning & Budget  
Joint Legislative Budget Committee  
Arizona Massage Board Members

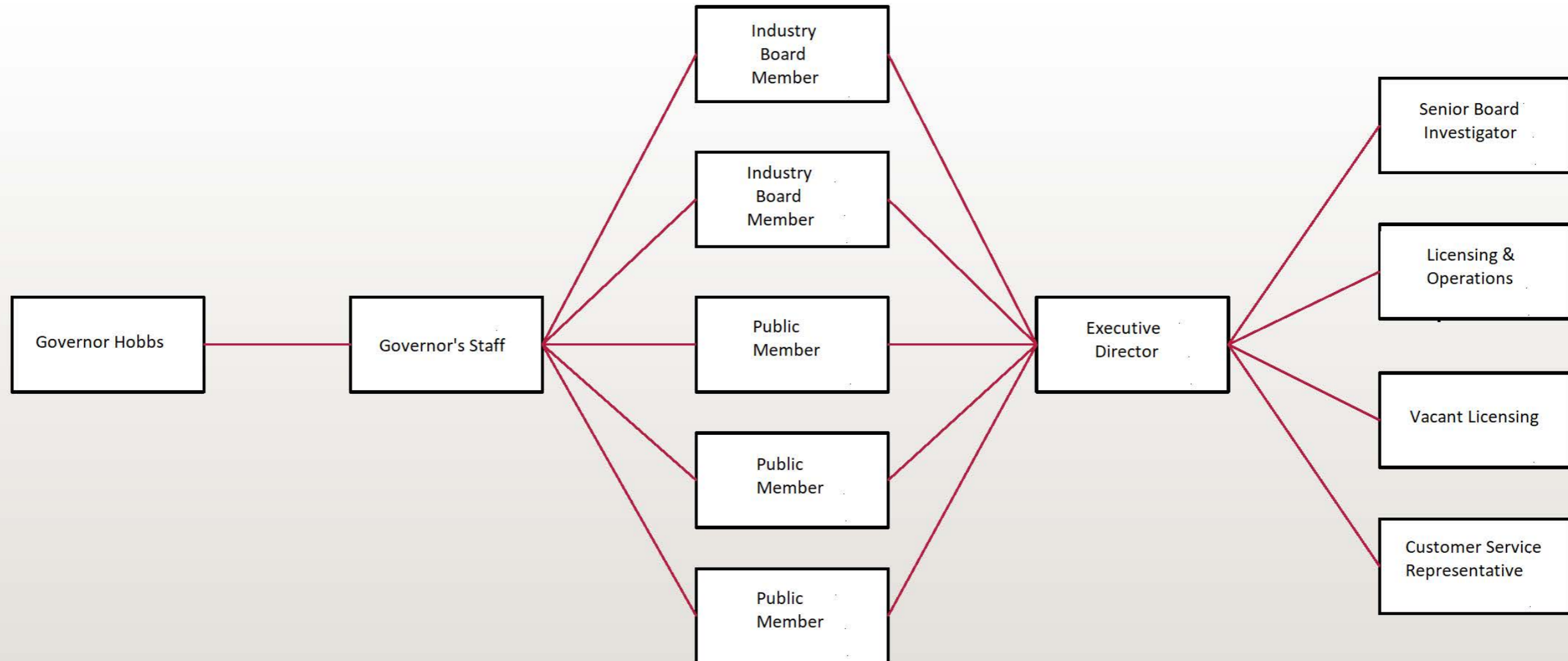


# ARIZONA MASSAGE BOARD

1740 West Adams, Suite 3401  
Phoenix, Arizona 85007  
(602) 542-8604

[info@massageboard.az.gov](mailto:info@massageboard.az.gov)

<http://massagetherapy.az.gov>





# State of Arizona Budget Request

State Agency

## Board of Massage Therapy

A.R.S. Citation: A.R.S. § 32-4201

### Governor Hobbs:

This and the accompanying budget schedules, statements and explanatory information constitute the operating budget request for this agency for Fiscal Year 2026.

To the best of my knowledge all statements and explanations contained in the estimates submitted are true and correct.

Agency Head: **Tom Aughterton**  
Title: **Executive Director**

*Tom Aughterton* 9/3/2024  
(signature)

Phone: 6025428217

Prepared by: Tom Aughterton  
Email Address: tom.aughterton@massageboard.az.gov  
Date Prepared: September 3, 2024

<b>Appropriated Funds</b>		<b>FY 2025 Expenditure Plan</b>	<b>FY 2026 Funding Issue</b>	<b>FY 2026 Total Request</b>
Total Amount Requested:		607.7	-	607.7
Massage Therapy Board Fund		607.7	-	607.7
<b>Non-Appropriated Funds</b>		<b>FY 2025 Expenditure Plan</b>	<b>FY 2026 Funding Issue</b>	<b>FY 2026 Total Request</b>
		-	-	-
Board of Massage Therapy Total:		607.7	-	607.7

## Revenue Schedule

<b>Agency:</b>	<b>Board of Massage Therapy</b>
----------------	---------------------------------

<b>Fund:</b>	<b>AA1000 General Fund</b>
--------------	----------------------------

AFIS Code	Category of Receipt and Description	FY 2024 Actuals	FY 2025 Estimate	FY 2026 Request
4415	Occupational & Professional Licenses	54.5	54.6	54.6
4519	Other Fines, Forfeitures, Penalties and Liquidated Damages	5.4	5.5	5.5
4645	Payment Card Transaction Fees Paid	(1.1)	(1.1)	(1.1)
4699	Miscellaneous Receipts	0.2	0.3	0.3
<b>General Fund Total:</b>		<b>59.1</b>	<b>59.3</b>	<b>59.3</b>

---

**Forecast Methodology**

---

<b>Fund:</b>	<b>MT2553 Massage Therapy Board Fund</b>
--------------	--

AFIS Code	Category of Receipt and Description	FY 2024 Actuals	FY 2025 Estimate	FY 2026 Request
4415	Occupational & Professional Licenses	490.8	490.9	490.9
4519	Other Fines, Forfeitures, Penalties and Liquidated Damages	48.8	48.8	48.8
4645	Payment Card Transaction Fees Paid	(10.1)	(10.0)	(10.0)
4649	Credit Card Fee Revenue	12.3	12.3	12.3
4699	Miscellaneous Receipts	2.1	2.2	2.2
<b>Massage Therapy Board Fund Total:</b>		<b>543.9</b>	<b>544.2</b>	<b>544.2</b>

---

**Forecast Methodology**

---

## Sources and Uses

<b>Agency:</b>	<b>Board of Massage Therapy</b>
----------------	---------------------------------

<b>Fund:</b>	<b>MT2553 Massage Therapy Board Fund</b>
--------------	--

The fund receives revenues from application, renewal, reinstatement, and late renewal fees for use in regulating massage therapists.

<b>Cash Flow Summary</b>
--------------------------

	FY 2024 Actuals	FY 2025 Estimate	FY 2026 Request
Beginning Balance	1,284.2	704.3	640.8
Revenue (from Revenue Schedule)	543.9	544.2	544.2
<b>Total Available</b>	<b>1,828.1</b>	<b>1,248.5</b>	<b>1,185.0</b>
Total Appropriated Disbursements	1,123.8	607.7	607.7
Total Non-Appropriated Disbursements	-	-	-
Balance Forward to Next Year	704.3	640.8	577.3

Explanation for Negative Ending Balance(s):

Board of Massage Therapy

<b>Appropriated Expenditure</b>
---------------------------------

	FY 2024 Actuals	FY 2025 Estimate	FY 2026 Request
<b>Expenditure Categories</b>			
Personal Services	272.7	258.0	258.0
Employee Related Expenditures	100.4	145.4	145.4
Professional & Outside Services	17.2	111.0	111.0
Travel In-State	-	1.5	1.5
Travel Out-Of-State	1.3	-	-
Food	-	-	-
Aid To Organizations & Individuals	-	-	-
Other Operating Expenditures	105.7	91.8	91.8
Equipment	-	-	-
Capital Outlay	-	-	-
Capital Equipment	9.5	-	-
Non-Capital Equipment	4.5	-	-
Debt Service	-	-	-
Cost Allocation & Indirect Costs	-	-	-
Transfers-Out	-	-	-
<b>Appropriated Expenditure Sub-Total:</b>	<b>511.3</b>	<b>607.7</b>	<b>607.7</b>
Non-Lapsing Authority from Prior Years	-	-	-
Administrative Adjustments	12.5	-	-
Capital Projects (Land, Bldgs, Improv)	-	-	-
Appropriated 27th Pay Roll	-	-	-
Legislative Fund Transfers	600.0	-	-
IT Project Transfers	-	-	-

## Sources and Uses

<b>Agency:</b>	<b>Board of Massage Therapy</b>
----------------	---------------------------------

<b>Fund:</b>	<b>MT2553 Massage Therapy Board Fund</b>
--------------	--

Proposed Fund Transfer	-	-	-
Residual Equity Transfer	-	-	-
Transfer Due to Fund Balance Cap	-	-	-
Prior Committed or Obligated Expenditures (no entry for AY)	-	-	-
Non-Appropriated 27th Pay Roll	-	-	-
<b>Appropriated Expenditure Total:</b>	<b>1,123.8</b>	<b>607.7</b>	<b>607.7</b>
<b>Appropriated FTE</b>	<b>3.0</b>	<b>5.0</b>	<b>5.0</b>

<b>Non-Appropriated Expenditure</b>
-------------------------------------

	FY 2024 Actuals	FY 2025 Estimate	FY 2026 Request
<b>Expenditure Categories</b>			
Personal Services	-	-	-
Employee Related Expenditures	-	-	-
Professional & Outside Services	-	-	-
Travel In-State	-	-	-
Travel Out-Of-State	-	-	-
Food	-	-	-
Aid To Organizations & Individuals	-	-	-
Other Operating Expenditures	-	-	-
Equipment	-	-	-
Capital Outlay	-	-	-
Capital Equipment	-	-	-
Non-Capital Equipment	-	-	-
Debt Service	-	-	-
Cost Allocation & Indirect Costs	-	-	-
Transfers-Out	-	-	-
<b>Non-Appropriated Expenditure Sub-Total:</b>	-	-	-
Non-Lapsing Authority from Prior Years	-	-	-
Administrative Adjustments	-	-	-
Capital Projects (Land, Bldgs, Improv)	-	-	-
Appropriated 27th Pay Roll	-	-	-
Legislative Fund Transfers	-	-	-
IT Project Transfers	-	-	-
Proposed Fund Transfer	-	-	-
Residual Equity Transfer	-	-	-
Transfer Due to Fund Balance Cap	-	-	-
Prior Committed or Obligated Expenditures (no entry for AY)	-	-	-

## Sources and Uses

**Agency:** Board of Massage Therapy

**Fund:** MT2553 Massage Therapy Board Fund

Non-Appropriated 27th Pay Roll	-	-	-
<b>Non-Appropriated Expenditure Total:</b>	-	-	-
<b>Non-Appropriated FTE</b>	-	-	-

## Summary of Expenditure and Budget Request for All Funds

**Agency:** Board of Massage Therapy

<b>Appropriated Funds</b>	<b>FY 2024 Actuals</b>	<b>FY 2025 Expenditure Plan</b>	<b>FY 2026 Funding Issue</b>	<b>FY 2026 Total Request</b>
<b>Program:</b>				
MTA-1-0 Board of Massage Therapy	511.3	607.7	-	607.7
<b>Appropriated Funds Total:</b>	<b>511.3</b>	<b>607.7</b>	<b>-</b>	<b>607.7</b>
<b>Expenditure Categories</b>				
FTE	3.0	5.0	-	5.0
Personal Services	272.7	258.0	-	258.0
Employee Related Expenditures	100.4	145.4	-	145.4
<b>Subtotal Personal Services and ERE</b>	<b>373.1</b>	<b>403.4</b>	<b>-</b>	<b>403.4</b>
Professional & Outside Services	17.2	111.0	-	111.0
Travel In-State	-	1.5	-	1.5
Travel Out-Of-State	1.3	-	-	-
Other Operating Expenditures	105.7	91.8	-	91.8
Capital Equipment	9.5	-	-	-
Non-Capital Equipment	4.5	-	-	-
<b>Expenditure Categories Total:</b>	<b>511.3</b>	<b>607.7</b>	<b>-</b>	<b>607.7</b>
<b>Board of Massage Therapy Total for All Funds:</b>	<b>511.3</b>	<b>607.7</b>	<b>-</b>	<b>607.7</b>

<b>Appropriated and Non-Appropriated</b>	<b>FY 2024 Actuals</b>	<b>FY 2025 Expenditure Plan</b>	<b>FY 2025 Funding Issue</b>	<b>FY 2026 Total Request</b>
MTA-1-0 Board of Massage Therapy	511.3	607.7	-	607.7
<b>Board of Massage Therapy Total for All Funds:</b>	<b>511.3</b>	<b>607.7</b>	<b>-</b>	<b>607.7</b>



## Summary of Expenditure and Budget Request for Selected Funds

<b>Agency:</b>	<b>Board of Massage Therapy</b>
----------------	---------------------------------

<b>Fund:</b>	<b>MT2553 Massage Therapy Board Fund (Appropriated)</b>
--------------	---

	FY 2024 Actuals	FY 2025 Expenditure Plan	FY 2026 Funding Issue	FY 2026 Total Request
<b>Program:</b>				
MTA-1-0 Board of Massage Therapy	511.3	607.7	-	607.7
<b>Massage Therapy Board Fund (Appropriated)</b>	<b>511.3</b>	<b>607.7</b>	-	<b>607.7</b>
<b>Summary Total:</b>				
<b>Expenditure Categories</b>				
FTE	3.0	5.0	-	5.0
Personal Services	272.7	258.0	-	258.0
Employee Related Expenditures	100.4	145.4	-	145.4
<b>Subtotal Personal Services and ERE</b>	<b>373.1</b>	<b>403.4</b>	-	<b>403.4</b>
Professional & Outside Services	17.2	111.0	-	111.0
Travel In-State	-	1.5	-	1.5
Travel Out-Of-State	1.3	-	-	-
Other Operating Expenditures	105.7	91.8	-	91.8
Capital Equipment	9.5	-	-	-
Non-Capital Equipment	4.5	-	-	-
<b>Expenditure Categories Total:</b>	<b>511.3</b>	<b>607.7</b>	-	<b>607.7</b>

## Program Budget Unit Summary of Expenditure and Budget Request for All Funds

**Agency:** Board of Massage Therapy

	FY 2024 Actuals	FY 2025 Expenditure Plan	FY 2026 Funding Issue	FY 2026 Total Request
<b>Program: MTA-1-0 Board of Massage Therapy</b>				
<b>Expenditure Categories</b>				
FTE	3.0	5.0	-	5.0
Personal Services	272.7	258.0	-	258.0
Employee Related Expenditures	100.4	145.4	-	145.4
<b>Subtotal Personal Services and ERE</b>	<b>373.1</b>	<b>403.4</b>	<b>-</b>	<b>403.4</b>
Professional & Outside Services	17.2	111.0	-	111.0
Travel In-State	-	1.5	-	1.5
Travel Out-Of-State	1.3	-	-	-
Other Operating Expenditures	105.7	91.8	-	91.8
Capital Equipment	9.5	-	-	-
Non-Capital Equipment	4.5	-	-	-
<b>Expenditure Categories Total:</b>	<b>511.3</b>	<b>607.7</b>	<b>-</b>	<b>607.7</b>

### Fund Source

#### Appropriated Funds

Massage Therapy Board Fund (Appropriated)	511.3	607.7	-	607.7
<b>Appropriated Funds Total:</b>	<b>511.3</b>	<b>607.7</b>	<b>-</b>	<b>607.7</b>
<b>Board of Massage Therapy Total:</b>	<b>511.3</b>	<b>607.7</b>	<b>-</b>	<b>607.7</b>

**Sub Program: MTA-1-1 Board of Massage Therapy**

### Expenditure Categories

FTE	3.0	5.0	-	5.0
Personal Services	272.7	258.0	-	258.0
Employee Related Expenditures	100.4	145.4	-	145.4
<b>Subtotal Personal Services and ERE</b>	<b>373.1</b>	<b>403.4</b>	<b>-</b>	<b>403.4</b>
Professional & Outside Services	17.2	111.0	-	111.0
Travel In-State	-	1.5	-	1.5
Travel Out-Of-State	1.3	-	-	-
Other Operating Expenditures	105.7	91.8	-	91.8
Capital Equipment	9.5	-	-	-
Non-Capital Equipment	4.5	-	-	-

## Program Budget Unit Summary of Expenditure and Budget Request for All Funds

<b>Agency:</b>	<b>Board of Massage Therapy</b>
----------------	---------------------------------

	FY 2024 Actuals	FY 2025 Expenditure Plan	FY 2026 Funding Issue	FY 2026 Total Request
<b>Program:</b> MTA-1-0 Board of Massage Therapy				
<b>Sub Program:</b> MTA-1-1 Board of Massage Therapy				

<b>Expenditure Categories Total:</b>	511.3	607.7	-	607.7
--------------------------------------	-------	-------	---	-------

<b>Fund Source</b>
--------------------

**Appropriated Funds**

Message Therapy Board Fund (Appropriated)	511.3	607.7	-	607.7
<b>Appropriated Funds Total:</b>	511.3	607.7	-	607.7
<b>Board of Massage Therapy Total:</b>	511.3	607.7	-	607.7

## Program Budget Unit Summary of Expenditure and Budget Request for Selected Funds

**Agency:** Board of Massage Therapy

	FY 2024 Actuals	FY 2025 Expenditure Plan	FY 2026 Funding Issue	FY 2026 Total Request
--	--------------------	--------------------------------	--------------------------	--------------------------

**Program:** MTA-1-0 Board of Massage Therapy

**Fund:** MT2553 Massage Therapy Board Fund

**Appropriated**

Personal Services	272.7	258.0	-	258.0
Employee Related Expenditures	100.4	145.4	-	145.4
<b>Subtotal Personal Services and ERE</b>	<b>373.1</b>	<b>403.4</b>	-	<b>403.4</b>
Professional & Outside Services	17.2	111.0	-	111.0
Travel In-State	-	1.5	-	1.5
Travel Out-Of-State	1.3	-	-	-
Other Operating Expenditures	105.7	91.8	-	91.8
Capital Equipment	9.5	-	-	-
Non-Capital Equipment	4.5	-	-	-
<b>Expenditure Categories Total:</b>	<b>511.3</b>	<b>607.7</b>	-	<b>607.7</b>
<b>Massage Therapy Board Fund Total:</b>	<b>511.3</b>	<b>607.7</b>	-	<b>607.7</b>
<b>Program Total for Select Funds:</b>	<b>511.3</b>	<b>607.7</b>	-	<b>607.7</b>

**Sub Program:** MTA-1-1 Board of Massage Therapy

**Fund:** MT2553 Massage Therapy Board Fund

**Appropriated**

Personal Services	272.7	258.0	-	258.0
Employee Related Expenditures	100.4	145.4	-	145.4
<b>Subtotal Personal Services and ERE</b>	<b>373.1</b>	<b>403.4</b>	-	<b>403.4</b>
Professional & Outside Services	17.2	111.0	-	111.0
Travel In-State	-	1.5	-	1.5
Travel Out-Of-State	1.3	-	-	-
Other Operating Expenditures	105.7	91.8	-	91.8
Capital Equipment	9.5	-	-	-
Non-Capital Equipment	4.5	-	-	-
<b>Expenditure Categories Total:</b>	<b>511.3</b>	<b>607.7</b>	-	<b>607.7</b>
<b>Massage Therapy Board Fund Total:</b>	<b>511.3</b>	<b>607.7</b>	-	<b>607.7</b>

## Program Budget Unit Summary of Expenditure and Budget Request for Selected Funds

<b>Agency:</b>	Board of Massage Therapy			
	<b>FY 2024 Actuals</b>	<b>FY 2025 Expenditure Plan</b>	<b>FY 2026 Funding Issue</b>	<b>FY 2026 Total Request</b>
<b>Program:</b>	MTA-1-0 Board of Massage Therapy			
<b>Sub Program:</b>	MTA-1-1 Board of Massage Therapy			
<b>Fund:</b>	MT2553 Massage Therapy Board Fund			
<b>Sub Program Total for Select Funds:</b>	511.3	607.7	-	607.7

## Program Summary of Expenditure and Budget Request

**Agency:** Board of Massage Therapy

**Program:** Board of Massage Therapy

<b>Program Summary</b>		FY 2024 Actuals	FY 2025 Expenditure Plan	FY 2026 Funding Issue	FY 2026 Total Request
MTA-1-1	Board of Massage Therapy	511.3	607.7	-	607.7
<b>Board of Massage Therapy Summary Total:</b>		<b>511.3</b>	<b>607.7</b>	<b>-</b>	<b>607.7</b>
<b>Expenditure Categories</b>					
FTE	FTE	3.0	5.0	-	5.0
6000	Personal Services	272.7	258.0	-	258.0
6100	Employee Related Expenditures	100.4	145.4	-	145.4
<b>Subtotal Personal Services and ERE</b>		<b>373.1</b>	<b>403.4</b>	<b>-</b>	<b>403.4</b>
6200	Professional & Outside Services	17.2	111.0	-	111.0
6500	Travel In-State	-	1.5	-	1.5
6600	Travel Out-Of-State	1.3	-	-	-
7000	Other Operating Expenditures	105.7	91.8	-	91.8
8400	Capital Equipment	9.5	-	-	-
8500	Non-Capital Equipment	4.5	-	-	-
<b>Expenditure Categories Total:</b>		<b>511.3</b>	<b>607.7</b>	<b>-</b>	<b>607.7</b>
<b>Fund Source</b>					
<b>Appropriated Funds</b>					
MT2553	Massage Therapy Board Fund (Appropriated)	511.3	607.7	-	607.7
<b>Appropriated Funds Total:</b>		<b>511.3</b>	<b>607.7</b>	<b>-</b>	<b>607.7</b>
<b>Board of Massage Therapy Summary Total:</b>		<b>511.3</b>	<b>607.7</b>	<b>-</b>	<b>607.7</b>

## Program Summary of Expenditure and Budget Request for Selected Funds

**Agency:** Board of Massage Therapy

**Program:** Board of Massage Therapy

**Fund:** MT2553 Massage Therapy Board Fund (Appropriated)

<b>Program Expenditures</b>		FY 2024 Actuals	FY 2025 Expenditure Plan	FY 2026 Funding Issue	FY 2026 Total Request
MTA-1-1	Board of Massage Therapy	511.3	607.7	-	607.7
	<b>Massage Therapy Board Fund (Appropriated)</b>	<b>511.3</b>	<b>607.7</b>	<b>-</b>	<b>607.7</b>
	<b>Summary Total:</b>				
<b>Appropriated Funding</b>					
6000	Personal Services	272.7	258.0	-	258.0
6100	Employee Related Expenditures	100.4	145.4	-	145.4
	<b>Subtotal Personal Services and ERE</b>	<b>373.1</b>	<b>403.4</b>	<b>-</b>	<b>403.4</b>
6200	Professional & Outside Services	17.2	111.0	-	111.0
6500	Travel In-State	-	1.5	-	1.5
6600	Travel Out-Of-State	1.3	-	-	-
7000	Other Operating Expenditures	105.7	91.8	-	91.8
8400	Capital Equipment	9.5	-	-	-
8500	Non-Capital Equipment	4.5	-	-	-
	<b>Expenditure Categories Total:</b>	<b>511.3</b>	<b>607.7</b>	<b>-</b>	<b>607.7</b>
	<b>Fund MT2553 - A Total:</b>	<b>511.3</b>	<b>607.7</b>	<b>-</b>	<b>607.7</b>
	<b>Board of Massage Therapy Total:</b>	<b>511.3</b>	<b>607.7</b>	<b>-</b>	<b>607.7</b>

## Program Expenditure Schedule

**Agency:** Board of Massage Therapy

	FY 2024 Actuals	FY 2025 Expenditure Plan	FY 2026 Funding Issue	FY 2026 Total Request
--	--------------------	--------------------------------	-----------------------------	-----------------------------

**Program:** MTA-1-0 Board of Massage Therapy

<b>FTE</b>				
FTE	3.0	5.0	-	5.0
<b>Expenditure Category Total:</b>	-	-	-	-

**Fund Source**

**Appropriated Funds**

MT2553 Massage Therapy Board Fund (Appropriated)	3.0	5.0	-	5.0
<b>Appropriated Funds Total:</b>	3.0	5.0	-	5.0
<b>Fund Source Total:</b>	3.0	5.0	-	5.0

**Personal Services**

Personal Services	271.2	258.0	-	258.0
Board & Commission Members Compensation	1.5	-	-	-
<b>Expenditure Category Total:</b>	272.7	258.0	-	258.0

**Fund Source**

**Appropriated Funds**

MT2553 Massage Therapy Board Fund (Appropriated)	272.7	258.0	-	258.0
<b>Appropriated Funds Total:</b>	272.7	258.0	-	258.0
<b>Fund Source Total:</b>	272.7	258.0	-	258.0

**Employee Related Expenditures**

Employee Related Expenses	-	145.4	-	145.4
FICA Taxes	20.4	-	-	-
Medical Insurance	42.7	-	-	-
Basic Life	0.0	-	-	-
Long-Term Disability (ASRS)	0.2	-	-	-
Dental Insurance	0.3	-	-	-
Workers' Compensation	2.2	-	-	-
Arizona State Retirement System	19.7	-	-	-
Alternate Retirement Contributions – Reemployed Retirees	9.7	-	-	-
Personnel Board Pro-Rata Charges	2.3	-	-	-



## Program Expenditure Schedule

**Agency:** Board of Massage Therapy

	FY 2024 Actuals	FY 2025 Expenditure Plan	FY 2026 Funding Issue	FY 2026 Total Request
<b>Program: MTA-1-0 Board of Massage Therapy</b>				
Information Technology Pro Rata Charge	1.7	-	-	-
Accumulated Sick Leave Fund Charge	1.1	-	-	-
<b>Expenditure Category Total:</b>	<b>100.4</b>	<b>145.4</b>	<b>-</b>	<b>145.4</b>

### Fund Source

#### Appropriated Funds

MT2553	Massage Therapy Board Fund (Appropriated)	100.4	145.4	-	145.4
<b>Appropriated Funds Total:</b>		<b>100.4</b>	<b>145.4</b>	<b>-</b>	<b>145.4</b>
<b>Fund Source Total:</b>		<b>100.4</b>	<b>145.4</b>	<b>-</b>	<b>145.4</b>

### Professional & Outside Services

Professional and Outside Services	-	111.0	-	111.0
Attorney General Legal Services	15.0	-	-	-
Other Professional & Outside Services	2.2	-	-	-
<b>Expenditure Category Total:</b>	<b>17.2</b>	<b>111.0</b>	<b>-</b>	<b>111.0</b>

### Fund Source

#### Appropriated Funds

MT2553	Massage Therapy Board Fund (Appropriated)	17.2	111.0	-	111.0
<b>Appropriated Funds Total:</b>		<b>17.2</b>	<b>111.0</b>	<b>-</b>	<b>111.0</b>
<b>Fund Source Total:</b>		<b>17.2</b>	<b>111.0</b>	<b>-</b>	<b>111.0</b>

### Travel In-State

Travel In-State	-	1.5	-	1.5
<b>Expenditure Category Total:</b>	<b>-</b>	<b>1.5</b>	<b>-</b>	<b>1.5</b>

### Fund Source

#### Appropriated Funds

MT2553	Massage Therapy Board Fund (Appropriated)	-	1.5	-	1.5
<b>Appropriated Funds Total:</b>		<b>-</b>	<b>1.5</b>	<b>-</b>	<b>1.5</b>
<b>Fund Source Total:</b>		<b>-</b>	<b>1.5</b>	<b>-</b>	<b>1.5</b>

### Travel Out-Of-State

## Program Expenditure Schedule

**Agency:** Board of Massage Therapy

	FY 2024 Actuals	FY 2025 Expenditure Plan	FY 2026 Funding Issue	FY 2026 Total Request
--	--------------------	--------------------------------	-----------------------------	-----------------------------

<b>Program: MTA-1-0 Board of Massage Therapy</b>				
Airfare and Other Common Carrier Charges	1.3	-	-	-
<b>Expenditure Category Total:</b>	<b>1.3</b>	-	-	-

### Fund Source

**Appropriated Funds**

MT2553	Massage Therapy Board Fund (Appropriated)	1.3	-	-	-
<b>Appropriated Funds Total:</b>		<b>1.3</b>	-	-	-
<b>Fund Source Total:</b>		<b>1.3</b>	-	-	-

### Other Operating Expenditures

Other Operating Expenses	-	91.8	-	91.8
Risk Management Charges to State Agencies	1.4	-	-	-
Internal Service Computer Processing, Hosting, Maintenance and Support Costs	5.6	-	-	-
External Programming and System Development Costs	2.7	-	-	-
Charges Imposed Related to AFIS.	2.0	-	-	-
External Telecommunications Charges	5.9	-	-	-
Building Rent Charges to State Agencies	28.7	-	-	-
Late Charges on Overdue Payments	0.1	-	-	-
Internal Accounting, Budgeting & Financial Services	35.4	-	-	-
Office Supplies	2.1	-	-	-
Computer Supplies	0.6	-	-	-
Advertising	0.1	-	-	-
Postage & Delivery	4.8	-	-	-
Dues	2.8	-	-	-
Books, Subscriptions & Publications	13.6	-	-	-
Other Miscellaneous Operating	0.0	-	-	-
<b>Expenditure Category Total:</b>	<b>105.7</b>	<b>91.8</b>	-	<b>91.8</b>

### Fund Source

**Appropriated Funds**

MT2553	Massage Therapy Board Fund (Appropriated)	105.7	91.8	-	91.8
--------	---	-------	------	---	------

## Program Expenditure Schedule

**Agency:** Board of Massage Therapy

	FY 2024 Actuals	FY 2025 Expenditure Plan	FY 2026 Funding Issue	FY 2026 Total Request
<b>Program: MTA-1-0 Board of Massage Therapy</b>				
Appropriated Funds Total:	105.7	91.8	-	91.8
<b>Fund Source Total:</b>	<b>105.7</b>	<b>91.8</b>	-	<b>91.8</b>

### Capital Equipment

Purchased or licensed software / website	9.5	-	-	-
<b>Expenditure Category Total:</b>	<b>9.5</b>	-	-	-

### Fund Source

**Appropriated Funds**

MT2553 Massage Therapy Board Fund (Appropriated)	9.5	-	-	-
<b>Appropriated Funds Total:</b>	<b>9.5</b>	-	-	-
<b>Fund Source Total:</b>	<b>9.5</b>	-	-	-

### Non-Capital Equipment

Computer Equipment – Non- Capitalized Purchases	4.5	-	-	-
<b>Expenditure Category Total:</b>	<b>4.5</b>	-	-	-

### Fund Source

**Appropriated Funds**

MT2553 Massage Therapy Board Fund (Appropriated)	4.5	-	-	-
<b>Appropriated Funds Total:</b>	<b>4.5</b>	-	-	-
<b>Fund Source Total:</b>	<b>4.5</b>	-	-	-

### Employee Retirement Coverage

Retirement System	FTE	Personal Services	Fund#
Arizona State Retirement System	5.0	258.0	MT2553-A

**Sub Program: MTA-1-1 Board of Massage Therapy**

## Program Expenditure Schedule

**Agency:** Board of Massage Therapy

	FY 2024 Actuals	FY 2025 Expenditure Plan	FY 2026 Funding Issue	FY 2026 Total Request
<b>Program:</b> MTA-1-0 Board of Massage Therapy				

**Sub Program:** MTA-1-1 Board of Massage Therapy

<b>FTE</b>				
FTE	3.0	5.0	-	5.0
<b>Expenditure Category Total:</b>	-	-	-	-

<b>Fund Source</b>				
<b>Appropriated Funds</b>				
MT2553 Massage Therapy Board Fund (Appropriated)	3.0	5.0	-	5.0
<b>Appropriated Funds Total:</b>	3.0	5.0	-	5.0
<b>Fund Source Total:</b>	3.0	5.0	-	5.0

<b>Personal Services</b>				
Personal Services	271.2	258.0	-	258.0
Board & Commission Members Compensation	1.5	-	-	-
<b>Expenditure Category Total:</b>	272.7	258.0	-	258.0

<b>Fund Source</b>				
<b>Appropriated Funds</b>				
MT2553 Massage Therapy Board Fund (Appropriated)	272.7	258.0	-	258.0
<b>Appropriated Funds Total:</b>	272.7	258.0	-	258.0
<b>Fund Source Total:</b>	272.7	258.0	-	258.0

## Program Expenditure Schedule

**Agency:** Board of Massage Therapy

	FY 2024 Actuals	FY 2025 Expenditure Plan	FY 2026 Funding Issue	FY 2026 Total Request
<b>Program:</b> MTA-1-0 Board of Massage Therapy				

**Sub Program:** MTA-1-1 Board of Massage Therapy

**Employee Related Expenditures**

Employee Related Expenses	-	145.4	-	145.4
FICA Taxes	20.4	-	-	-
Medical Insurance	42.7	-	-	-
Basic Life	0.0	-	-	-
Long-Term Disability (ASRS)	0.2	-	-	-
Dental Insurance	0.3	-	-	-
Workers' Compensation	2.2	-	-	-
Arizona State Retirement System	19.7	-	-	-
Alternate Retirement Contributions – Reemployed Retirees	9.7	-	-	-
Personnel Board Pro-Rata Charges	2.3	-	-	-
Information Technology Pro Rata Charge	1.7	-	-	-
Accumulated Sick Leave Fund Charge	1.1	-	-	-
<b>Expenditure Category Total:</b>	<b>100.4</b>	<b>145.4</b>	<b>-</b>	<b>145.4</b>

**Fund Source**

**Appropriated Funds**

MT2553 Massage Therapy Board Fund (Appropriated)	100.4	145.4	-	145.4
<b>Appropriated Funds Total:</b>	<b>100.4</b>	<b>145.4</b>	<b>-</b>	<b>145.4</b>
<b>Fund Source Total:</b>	<b>100.4</b>	<b>145.4</b>	<b>-</b>	<b>145.4</b>

## Program Expenditure Schedule

**Agency:** Board of Massage Therapy

	FY 2024 Actuals	FY 2025 Expenditure Plan	FY 2026 Funding Issue	FY 2026 Total Request
--	--------------------	--------------------------------	-----------------------------	-----------------------------

**Program:** MTA-1-0 Board of Massage Therapy

**Sub Program:** MTA-1-1 Board of Massage Therapy

**Professional & Outside Services**

Professional and Outside Services	-	111.0	-	111.0
Attorney General Legal Services	15.0	-	-	-
Other Professional & Outside Services	2.2	-	-	-
<b>Expenditure Category Total:</b>	<b>17.2</b>	<b>111.0</b>	<b>-</b>	<b>111.0</b>

**Fund Source**

**Appropriated Funds**

MT2553 Massage Therapy Board Fund (Appropriated)	17.2	111.0	-	111.0
<b>Appropriated Funds Total:</b>	<b>17.2</b>	<b>111.0</b>	<b>-</b>	<b>111.0</b>
<b>Fund Source Total:</b>	<b>17.2</b>	<b>111.0</b>	<b>-</b>	<b>111.0</b>

**Travel In-State**

Travel In-State	-	1.5	-	1.5
<b>Expenditure Category Total:</b>	<b>-</b>	<b>1.5</b>	<b>-</b>	<b>1.5</b>

**Fund Source**

**Appropriated Funds**

MT2553 Massage Therapy Board Fund (Appropriated)	-	1.5	-	1.5
<b>Appropriated Funds Total:</b>	<b>-</b>	<b>1.5</b>	<b>-</b>	<b>1.5</b>
<b>Fund Source Total:</b>	<b>-</b>	<b>1.5</b>	<b>-</b>	<b>1.5</b>

**Travel Out-Of-State**

Airfare and Other Common Carrier Charges	1.3	-	-	-
<b>Expenditure Category Total:</b>	<b>1.3</b>	<b>-</b>	<b>-</b>	<b>-</b>

**Fund Source**

**Appropriated Funds**

MT2553 Massage Therapy Board Fund (Appropriated)	1.3	-	-	-
<b>Appropriated Funds Total:</b>	<b>1.3</b>	<b>-</b>	<b>-</b>	<b>-</b>
<b>Fund Source Total:</b>	<b>1.3</b>	<b>-</b>	<b>-</b>	<b>-</b>

## Program Expenditure Schedule

**Agency:** Board of Massage Therapy

	FY 2024 Actuals	FY 2025 Expenditure Plan	FY 2026 Funding Issue	FY 2026 Total Request
<b>Program:</b> MTA-1-0 Board of Massage Therapy				

**Sub Program:** MTA-1-1 Board of Massage Therapy

**Other Operating Expenditures**

Other Operating Expenses	-	91.8	-	91.8
Risk Management Charges to State Agencies	1.4	-	-	-
Internal Service Computer Processing, Hosting, Maintenance and Support Costs	5.6	-	-	-
External Programming and System Development Costs	2.7	-	-	-
Charges Imposed Related to AFIS.	2.0	-	-	-
External Telecommunications Charges	5.9	-	-	-
Building Rent Charges to State Agencies	28.7	-	-	-
Late Charges on Overdue Payments	0.1	-	-	-
Internal Accounting, Budgeting & Financial Services	35.4	-	-	-
Office Supplies	2.1	-	-	-
Computer Supplies	0.6	-	-	-
Advertising	0.1	-	-	-
Postage & Delivery	4.8	-	-	-
Dues	2.8	-	-	-
Books, Subscriptions & Publications	13.6	-	-	-
Other Miscellaneous Operating	0.0	-	-	-
<b>Expenditure Category Total:</b>	<b>105.7</b>	<b>91.8</b>	-	<b>91.8</b>

**Fund Source**

**Appropriated Funds**

MT2553 Massage Therapy Board Fund (Appropriated)	105.7	91.8	-	91.8
<b>Appropriated Funds Total:</b>	<b>105.7</b>	<b>91.8</b>	-	<b>91.8</b>
<b>Fund Source Total:</b>	<b>105.7</b>	<b>91.8</b>	-	<b>91.8</b>

## Program Expenditure Schedule

**Agency:** Board of Massage Therapy

	FY 2024 Actuals	FY 2025 Expenditure Plan	FY 2026 Funding Issue	FY 2026 Total Request
--	--------------------	--------------------------------	-----------------------------	-----------------------------

**Program:** MTA-1-0 Board of Massage Therapy

**Sub Program:** MTA-1-1 Board of Massage Therapy

**Capital Equipment**

Purchased or licensed software / website	9.5	-	-	-
<b>Expenditure Category Total:</b>	<b>9.5</b>	-	-	-

**Fund Source**

**Appropriated Funds**

MT2553 Massage Therapy Board Fund (Appropriated)	9.5	-	-	-
<b>Appropriated Funds Total:</b>	<b>9.5</b>	-	-	-
<b>Fund Source Total:</b>	<b>9.5</b>	-	-	-

**Non-Capital Equipment**

Computer Equipment – Non- Capitalized Purchases	4.5	-	-	-
<b>Expenditure Category Total:</b>	<b>4.5</b>	-	-	-

**Fund Source**

**Appropriated Funds**

MT2553 Massage Therapy Board Fund (Appropriated)	4.5	-	-	-
<b>Appropriated Funds Total:</b>	<b>4.5</b>	-	-	-
<b>Fund Source Total:</b>	<b>4.5</b>	-	-	-

**Employee Retirement Coverage**

Retirement System	FTE	Personal Services	Fund#
Arizona State Retirement System	5.0	5.0	MT2553-A



# Program Expenditure Schedule

**Agency:** Board of Massage Therapy

## Administrative Costs Summary

**FY 2026**

Personal Services	15.0
ERE	5.0
All Other	5.0
<b>Administrative Costs Total:</b>	<b>25.0</b>

## Administrative Costs / Total Expenditure Ratio

**Request**

**Admin %**

**FY 2026**

607.7

4.1%

## Agency Summary

### Board of Massage Therapy

Tom Aughterton, Executive Director

Phone: 6025428217

A.R.S. § 32-4201

#### Mission:

*To protect the health, safety, and welfare of the citizens of Arizona by regulating and maintaining standards of practice in the practice of massage therapy.*

#### Description:

The Board of Massage Therapy licenses and regulates Massage Therapists who are entrusted to increase wellness, relaxation, stress reduction, pain relief, postural improvement, or provide general or specific therapeutic benefits. The Board evaluates the professional competency of Massage Therapists seeking to be licensed in Arizona. Further, the Board promotes continued competence and fitness by investigating complaints against Massage Therapists, holding hearings, monitoring the activities of its licensees, and enforcing the standards of practice for the massage therapy profession as set forth by law.

#### Agency Summary: (\$ Thousands)

Program	FY 2024 Actual	FY 2025 Estimate	FY 2026 Estimate
▶ Board of Massage Therapy	511.3	607.7	607.7
<b>Agency Total:</b>	<b>511.3</b>	<b>607.7</b>	<b>607.7</b>

#### Funding:

	FY 2024 Actual	FY 2025 Estimate	FY 2026 Estimate
Other Appropriated Funds	511.3	607.7	607.7
<b>Total Funding</b>	<b>511.3</b>	<b>607.7</b>	<b>607.7</b>

<b>FTE Positions</b>	<b>3.0</b>	<b>5.0</b>	<b>5.0</b>
----------------------	------------	------------	------------

## 5 Year Plan

#### Description:

#### Resource Assumptions

	FY 2027 Estimate	FY 2028 Estimate	FY 2029 Estimate
<b>Full-Time Equivalent Positions</b>	5.0	5.0	5.0
<b>General Fund</b>	-	-	-
<b>Other Appropriated Funds</b>	607.7	607.7	607.7
<b>Non-Appropriated Funds</b>	-	-	-
<b>Federal Funds</b>	-	-	-

◆ **Goal 1** To efficiently process license applications.

Performance Measures	FY 2023 Actual	FY 2024 Estimate	FY 2024 Actual	FY 2025 Estimate	FY 2026 Estimate
Average number of days to process an initial license application.	40	40	40	40	40

Average number of days to process a renewal application.	15	15	15	15	15
Massage therapy applications received for initial licensure and biennial renewal.	6,600	7,200	7,200	7,800	7,800

◆ **Goal 2** To investigate and adjudicate complaints in a timely manner.

<b>Performance Measures</b>	<b>FY 2023 Actual</b>	<b>FY 2024 Estimate</b>	<b>FY 2024 Actual</b>	<b>FY 2025 Estimate</b>	<b>FY 2026 Estimate</b>
Average number of days to resolve a massage therapy complaint	100	100	100	100	100
Complaints received against massage therapists	128	180	230	230	230
Complaints resolved in the fiscal year.	84	121	121	116	116

# Agency 5 Year Plan

## MTA Board of Massage Therapy

Description:

### Resource Assumptions

	FY 2027 Estimate	FY 2028 Estimate	FY 2029 Estimate
Full-Time Equivalent Positions	5.0	5.0	5.0
General Fund	-	-	-
Other Appropriated Funds	607.7	607.7	607.7
Non-Appropriated Funds	-	-	-
Federal Funds	-	-	-

## AGENCY SUMMARY

**Program:** MTA Board of Massage Therapy  
**Director:** Tom Aughterton, Executive Director  
**Phone:** 1740 W. Adams St, Ste. 3401, Phoenix, AZ 85007 6025428217  
**Statute:** A.R.S. § 32-4201  
**Plan Contact:** Tom Aughterton, Executive Director  
 1740 W. Adams St, Ste. 3401, Phoenix, AZ 85007 6025428217

**Mission:**

*To protect the health, safety, and welfare of the citizens of Arizona by regulating and maintaining standards of practice in the practice of massage therapy.*

**Description:**

The Board of Massage Therapy licenses and regulates Massage Therapists who are entrusted to increase wellness, relaxation, stress reduction, pain relief, postural improvement, or provide general or specific therapeutic benefits. The Board evaluates the professional competency of Massage Therapists seeking to be licensed in Arizona. Further, the Board promotes continued competence and fitness by investigating complaints against Massage Therapists, holding hearings, monitoring the activities of its licensees, and enforcing the standards of practice for the massage therapy profession as set forth by law.

◆ **Goal 1 To efficiently process license applications.**

**Performance Measures:**

ML	Budget	Type		FY 2023 Actual	FY 2024 Estimate	FY 2024 Actual	FY 2025 Estimate	FY 2026 Estimate
<input checked="" type="checkbox"/>	<input type="checkbox"/>	EF	Average number of days to process an initial license application.	40	40	40	40	40
<input checked="" type="checkbox"/>	<input type="checkbox"/>	EF	Average number of days to process a renewal application.	15	15	15	15	15
<input checked="" type="checkbox"/>	<input checked="" type="checkbox"/>	IP	Massage therapy applications received for initial licensure and biennial renewal.	6,600	7,200	7,200	7,800	7,800

◆ **Goal 2 To investigate and adjudicate complaints in a timely manner.**

**Performance Measures:**

ML	Budget	Type		FY 2023 Actual	FY 2024 Estimate	FY 2024 Actual	FY 2025 Estimate	FY 2026 Estimate
<input checked="" type="checkbox"/>	<input type="checkbox"/>	IP	Complaints received against massage therapists	128	180	230	230	230
<input checked="" type="checkbox"/>	<input type="checkbox"/>	OC	Complaints resolved in the fiscal year.	84	121	121	116	116
<input checked="" type="checkbox"/>	<input checked="" type="checkbox"/>	EF	Average number of days to resolve a massage therapy complaint	100	100	100	100	100

# Explore Plans

## P 0 MTA Board of Massage Therapy

G 1 To efficiently process license applications.

P 1 Average number of days to process an initial license application.

P 2 Average number of days to process a renewal application.

P 3 Massage therapy applications received for initial licensure and biennial renewal.

G 2 To investigate and adjudicate complaints in a timely manner.

P 1 Average number of days to resolve a massage therapy complaint

P 2 Complaints received against massage therapists

P 3 Complaints resolved in the fiscal year.

## P 1 MTA-1-0 Board of Massage Therapy

S 1 MTA-1-1 Board of Massage Therapy

# Explore Plans

## P 0 MTA Board of Massage Therapy

G 1 MTA-G001 To efficiently process license applications.

P 1 MTA-PM0001 Massage therapy applications received for initial licensure and biennial renewal.

P 2 MTA-PM0002 Average number of days to process an initial license application.

P 3 MTA-PM0003 Average number of days to process a renewal application.

G 2 MTA-G002 To investigate and adjudicate complaints in a timely manner.

P 1 MTA-PM0004 Complaints received against massage therapists

P 2 MTA-PM0005 Complaints resolved in the fiscal year.

P 3 MTA-PM0006 Average number of days to resolve a massage therapy complaint

## P 1 MTA-1-0 Board of Massage Therapy

S 1 MTA-1-1 Board of Massage Therapy